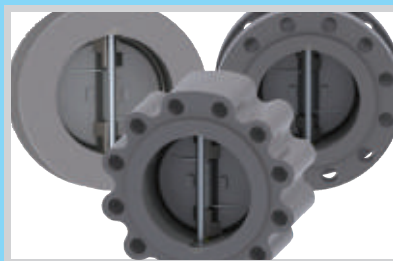
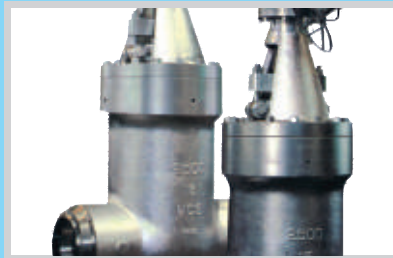


A trusted name in industrial valve company

www.fastwell.in



FTM
Fastwell



Fastwell Fitting Industries

is headquartered in Bakersfeld, California. We are a global manufacturer and supplier of valves to Oil & Gas, E&P, Petrochemical, Chemical, Mining/ Minerals, Power, Marine and Industrial markets.

Our diversified flow control packages consist of core Quarter & Multi Turn products, in a variety of alloys, trims, configurations, sizes and pressure classes, from general to severe in application. Fastwell Fitting Industries products are designed, engineered and manufactured to exceed your stringent process requirements.

Fastwell Global Operations are licensed and certified to API 6D, 6A, 600, PED & ISO 9000. Our wholly owned manufacturing centers facilitate Fastwell true global reach by providing best-in-class Sales, Supply and Customer excellence. Fastwell “never compromise” philosophy ensures total satisfaction, which produces repeat business from our valued clients regarding their CapEx Project, Fabrication, OEM and MRO needs.



CERTIFICATIONS & STANDARDS

American Standards

American Petroleum Institute

API-6D	Specification for Pipeline Valves
API-6A	Specification for Wellhead and Christmas Tree Equipment
API-6FA	Specification for Fire Test for Valves
API-594	Check Valves: Wafer, Wafer-Lug, and Double Flanged Type
API-598	Valve Inspection and Testing
API-600	Bolted Bonnet Steel Gate Valves for Petroleum and Natural Gas Industries
API-602	Compact Steel Gate Valves- Flanged, Threaded, Welding and Extended-Body Ends
API-607	Fire Test for Soft-Seated Quarter-Turn Valves
API-608	Metal Ball Valves - Flanged, Threaded, and Welding End
API-609	Butterfly Valves: Double Flanged, Lug and Wafer-Type
API-Q1	Specification for Quality Programs for the Petroleum, Petrochemical & Natural Gas

American Society of Mechanical Engineers

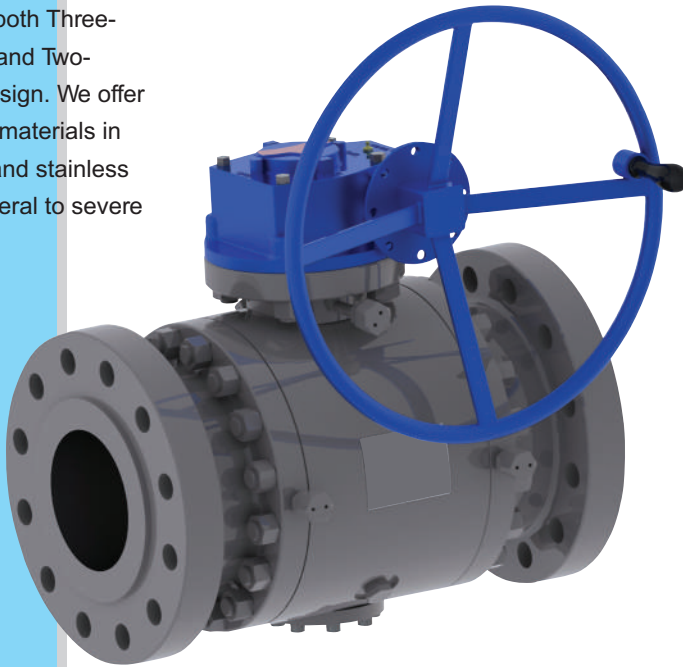
ASME-B1.20.1	Pipe Threads, General Purpose (inch)
ASME-B16.11	Forged Fittings, Socket-Welding and Threaded
ASME-B16.10	Face to Face and End to End Dimensions of Valves
ASME-B16.5	Pipe Flanges and Flanged Fittings NPS 1/2 ~ NPS 24
ASME-B16.47	Large Diameter Steel Flanges NPS 26 ~ NPS 60
ASME-B16.25	Buttwelding Ends
ASME-B16.34	Valves - Flanged, Threaded and Welding End

International Standards

ISO 9001:2008	Quality Management Systems
ISO 14001	Environmental Management
OHSAS 18001:2007	Occupational Health and Safety Management System
ISO/TS 29001	Petroleum, Petrochemical and Natural Gas Industries - Sector Specific Quality Management Systems
CE/PED	Pressure Equipment Directive
GOST	Russian National Technical Standards
CRN	Canadian Registration Number
Z245.15.96	Pipeline Steel Valves

Forged Body Trunnion Mounted Ball Valves

Fastwell produces a full line of API-6D Trunnion Mounted Ball valves in both Three-Piece Forged and Two-Piece Cast Design. We offer a full range of materials in carbon, alloy and stainless steel from general to severe in application.



SIZE RANGE: 2" - 48"
 PRESSURE CLASS: ASME 150 - 2500
 API 2000 - 5000
 API STANDARDS: 6D & 6A
 ASME B16.34

FEATURES

- ▶ 3-PIECE BODY
- ▶ FULL AND REDUCED BORE
- ▶ TRUNNION MOUNTED
- ▶ DOUBLE BLOCK AND BLEED
- ▶ ANTI-BLOW OUT STEM
- ▶ ANTI-STATIC DEVICE
- ▶ FIRESAFE TO API-607/6FA
- ▶ SPRING LOADED SEATS
- ▶ SEALANT INJECTION
- ▶ NACE MR-01-75

Cast Body Trunnion Mounted Ball Valves



SIZE RANGE: 2" - 24"
 PRESSURE CLASS: ASME 150 - 600
 API STANDARDS: 6D
 ASME B16.34

FEATURES

- ▶ 2-PIECE BODY
- ▶ FULL AND REDUCED BORE
- ▶ TRUNNION MOUNTED
- ▶ DOUBLE BLOCK AND BLEED
- ▶ ANTI-BLOW OUT STEM
- ▶ ANTI-STATIC DEVICE
- ▶ FIRESAFE TO API-607/6FA
- ▶ SPRING LOADED SEATS
- ▶ SEALANT INJECTION
- ▶ NACE MR-01-75

Flanged Unibody Ball Valves

The Fastwell split body and unibody ball valves are designed, constructed, and tested according to API and ASME/ANSI Standards. Other international standards including BS and Din are also available on request.



SIZE RANGE: 2" - 10"
 PRESSURE CLASS: ASME 150 - 300
 API STANDARDS: 6D & 608
 ASME B16.34

FEATURES

- ▶ REDUCED BORE
- ▶ 1-PIECE BODY
- ▶ ANTI-BLOW OUT STEM
- ▶ ANTI-STATIC DEVICE
- ▶ FIRESAFE TO API-607/6FA
- ▶ ZERO EMISSIONS FROM STEM
- ▶ NACE MR-01-75

Flanged Split Body Ball Valves

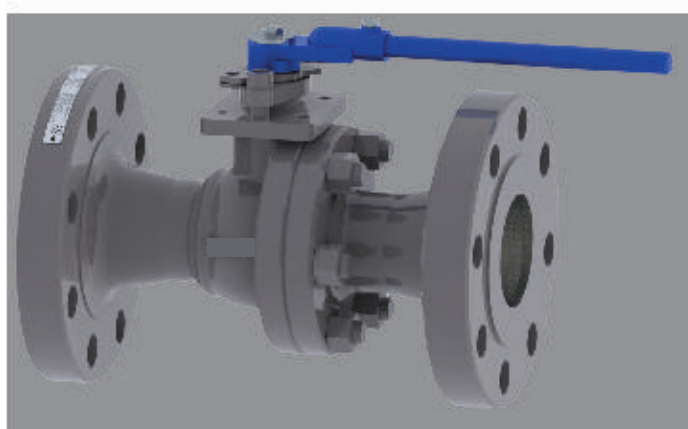


SIZE RANGE: 1/2" - 8"
 PRESSURE CLASS: ASME 150 - 600
 API STANDARDS: 6D & 608
 ASME B16.34

FEATURES

- ▶ FULL BORE
- ▶ 2-PIECE BODY
- ▶ ANTI-BLOW OUT STEM
- ▶ ANTI-STATIC DEVICE
- ▶ FIRESAFE TO API-607/6FA
- ▶ ZERO EMISSIONS FROM STEM
- ▶ NACE MR-01-75

Flanged Split Body Ball Valves



SIZE RANGE: 2" - 10"
 PRESSURE CLASS: ASME 150 - 600
 API STANDARDS: 6D & 608
 ASME B16.34

FEATURES

- ▶ REDUCED BORE
- ▶ 2-PIECE BODY
- ▶ ANTI-BLOW OUT STEM
- ▶ ANTI-STATIC DEVICE
- ▶ FIRESAFE TO API-607/6FA
- ▶ ZERO EMISSIONS FROM STEM
- ▶ NACE MR-01-75

Cast Steel Valves Gate, Globe & Check

Fastwell produces a wide variety of Cast Steel Gate, Globe, and Check valves. Other available designs include cast steel angle valves, O-ring seal block and bleed gate valves and cryogenic valves.



SIZE RANGE: 2" - 60"
 PRESSURE CLASS: ASME 150 - 1500
 API STANDARDS: 600 & 603
 ASME B16.34

FEATURES

- ▶ FLANGED, RF, RTJ, BW ENDS
- ▶ WELDED IN SEAT RINGS
- ▶ LOW EMISSIONS PACKING
- ▶ SINGLE PIECE STEM DESIGN
- ▶ SOLID FLEXIBLE WEDGE

Pressure Seal Valves Gate, Globe & Check

Fastwell produces a wide variety of Cast Steel Pressure Seal Gate, Globe and Check valves. Other available pressure seal designs include Tilting Disc, Piston Type and Stop Check valves.



SIZE RANGE: 2" - 24"
 PRESSURE CLASS: ASME 600 - 2500
 API STANDARDS: 600
 ASME B16.34

FEATURES

- ▶ FLANGED, RF, RTJ, BW ENDS
- ▶ WELDED IN SEAT RINGS
- ▶ LOW EMISSIONS PACKING
- ▶ SINGLE PIECE STEM DESIGN
- ▶ SOLID FLEXIBLE WEDGE

Forged steel valves Gate, Globe & Check

Fastwell produces a wide variety of Forged Steel Gate, Globe, and Check valves. Other available designs include y-pattern globe and check valves and cryogenic valves.



SIZE RANGE: 1/4" - 3"
 PRESSURE CLASS: ASME 150 - 2500
 API STANDARD: 602
 ASME B16.34

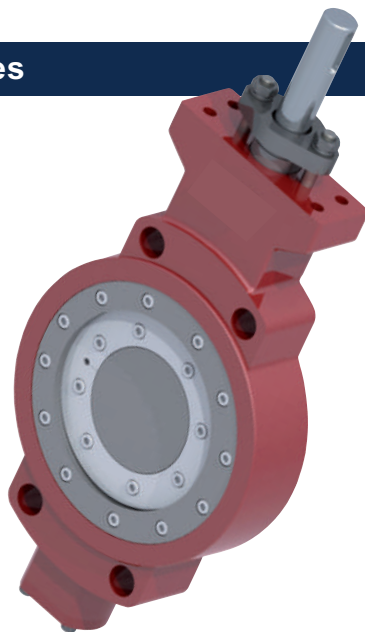
FEATURES

- ▶ FNPT, SW, FLANGED RF, RTJ, BW ENDS
- ▶ LOW EMISSIONS PACKING
- ▶ SINGLE PIECE STEM DESIGN
- ▶ SOLID WEDGE

Triple Offset Butterfly Valves

Fastwell line of Triple Offset Butterfly valves are available in a wide range of pressure class, materials and body configurations.

This product is designed for Bi-directional Bubble Tight Shutoff being fully engineered and manufactured to exceed our clients stringent process requirements.



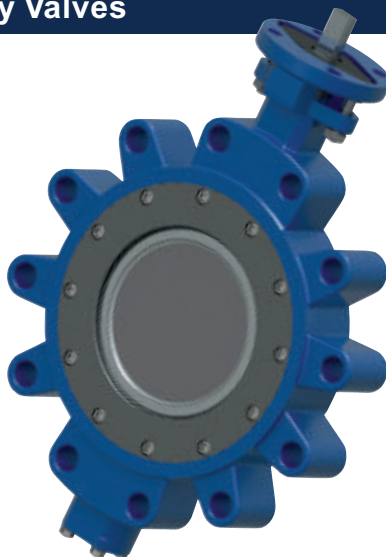
SIZE RANGE: 2" - 30"
PRESSURE CLASS: ASME 150 - 600
API STANDARDS: 609

FEATURES

- ▶ TRIPLE ECCENTRIC DISC-SHAFT
- ▶ ANTI-BLOW OUT STEM
- ▶ BI-DIRECTIONAL
- ▶ FIRESAFE DESIGN
- ▶ LOW FRICTION BODY SEAT
- ▶ ZERO LEAKAGE
- ▶ WAFER, LUG & FLANGE TYPE

High Performance Butterfly Valves

Fastwell Double Offset High Performance Butterfly valves are designed for shutoff and throttling control of liquids and gas. We offer a full range of materials to suit your specific applications.



SIZE RANGE: 2" - 48"
PRESSURE CLASS: ASME 150 - 600
API STANDARDS: 609

FEATURES

- ▶ DOUBLE ECCENTRIC DISC-SHAFT
- ▶ ANTI-BLOW OUT STEM
- ▶ BI-DIRECTIONAL
- ▶ FIRESAFE DESIGN AVAILABLE
- ▶ LOW FRICTION BODY SEAT
- ▶ ZERO LEAKAGE WITH SOFT SEAT
- ▶ WAFER, LUG & FLANGE TYPE

Resilient Seated Butterfly Valves

Fastwell offers a full line of Resilient Seated Butterfly Valves designed for Oil & Gas, HVAC and Industrial applications. This product is economically priced for on/off and throttling services.



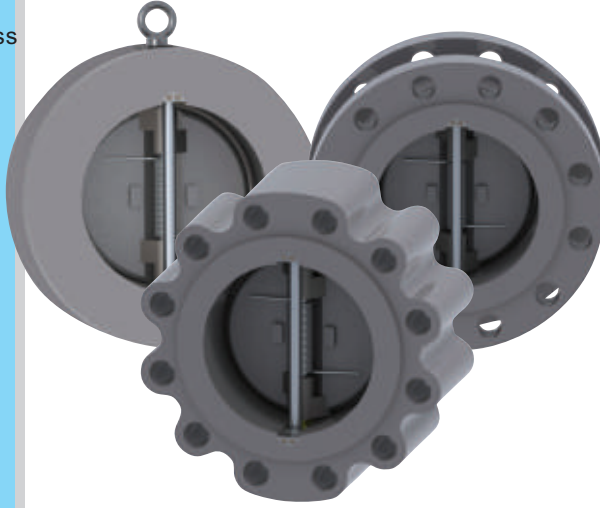
SIZE RANGE: 2" - 48"
PRESSURE CLASS: ASME 125 - 150
API STANDARDS: 609

FEATURES

- ▶ SINGLE ECCENTRIC DISC-SHAFT
- ▶ ANTI-BLOW OUT STEM
- ▶ BI-DIRECTIONAL
- ▶ ZERO LEAKAGE
- ▶ WAFER, LUG & FLANGE TYPE

Dual Plate Check Valves

Fastwell retainerless design dual plate check valves are available for a broad range of applications.



SIZE RANGE: 2" - 60"
 PRESSURE CLASS: ASME 150 - 2500
 API STANDARDS: 594, 6D & 6A
 ASME B16.34

FEATURES

- ▶ WAFER, LUG & FLANGE TYPE
- ▶ RETAINERLESS DESIGN
- ▶ LOW CRACKING PRESSURE
- ▶ NON SLAMMING
- ▶ FIRESAFE BY DESIGN

Threaded & Socket-Weld Floating Ball Valves

Fastwell small floating valves are available in high pressure up to 6000 psi as well as general use commodity application.



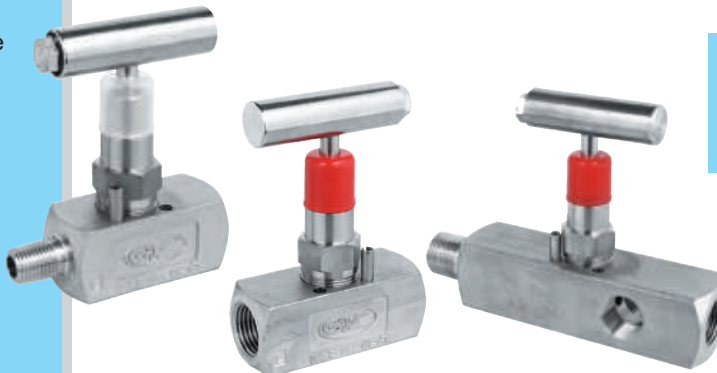
SIZE RANGE: 1/4" - 3"
 PRESSURE CLASS: ASME 800 - 1500
 PRESSURE RANGE: 800 - 6,000 WOG

FEATURES

- ▶ 1, 2 & 3 PIECE BODY
- ▶ FULL AND REDUCED BORE
- ▶ ANTI-BLOW OUT STEM
- ▶ ANTI-STATIC DEVICE
- ▶ AVAILABLE FIRESAFE TO API-607
- ▶ NACE MR-01-75

Needle & Gauge Valves

Fastwell needle and gauge valves are designed and produced for accurate regulation at pressure up to 10,000 psi.



SIZE RANGE : 1/4" - 1"
 PRESSURE RANGE: 6,000 - 10,000 WOG

FEATURES

- ▶ HEAVY DUTY BODY
- ▶ METAL TO METAL BACK SEAT
- ▶ O-RING STEM SEAL
- ▶ THREADED BONNET CONNECTION
- ▶ NACE MR-01-75

Wellhead API 6A Gate Valve

Fastwell produces a full line of API-6A Gate valves in both expanding and slab gate design. We offer a full range of materials and classes from general to sour service based on customer requirements for wellhead, manifold and fracture applications.

SIZE RANGE: 1 13/16" - 7 1/16"
 API: 2,000 - 15,000 PSI
 API STANDARDS: 6A
 MATERIAL CLASS: AA - FF

FEATURES

- ▶ CAST BODY 2,000- 5,000 PSI
- ▶ FORGED BODY 2,000- 15,000 PSI
- ▶ EXPANDING OR SLAB GATE
- ▶ RTJ OR THREADED ENDS



Wellhead Components

Fastwell designs and manufactures API-6A wellhead products to cover our customer's broad range of product configurations.

- ▶ TUBING BONNETS & FLOW T'S
- ▶ CASING SLIPS
- ▶ TUBING HEADS
- ▶ CASING HEADS
- ▶ TUBING HANGERS & SECONDARIES



CATALOG	VALVE TYPE	DESIGN CODE	VALVE SIZE	PRESSURE CLASS	MATERIAL DESCRIPTION
TBV-1001	Trunnion Mounted Ball Valves	API 6D, API 6A & ASME B16.34	2" TO 48"	ASME 150 TO ASME 2500 API 6A 3000/5000	A105N, A216 WCB, A352 LCC, A350 LF2, A352 LCB, A351 CF8, A351 CF8M, A182 F304, A182 F304L, A182 F316, A182 F316L, A351 CF3, A351 CF3M, A351 CN-7M, A182 F51, A182 F53, A182 F55, A890-6A, A890- 5A, A890- 4A , B462, B148
FBV-1001	Flanged Floating Ball Valves	API 6D, API 608 & ASME B16.34	1/2" TO 10"	ASME 150 TO ASME 600	A216 WCB, A352 LCB, A352 LCC, A351 CF3, A351 CF3M, A351 CN-7M, A351 CF8, A351 CF8M, A890-6A, A890- 5A, A890- 4A , B148
SBV-1001	Floating Ball Valves, Threaded & Socket Weld	ASME B16.34	1/2" TO 2"	ASME 800 & 1500	A105N, A182 F316
	Floating Ball Valves, Threaded	ASME B16.34	1/4" TO 3"	1000WOG TO 6000WOG	A216 WCB, A351 CF8M, AISI 1018
	Floating Ball Valves, Threaded & Socket Weld	ASME B16.34	2-1/2" TO 3"	800WOG	A216 WCB, A351 CF8M
CSV-1003	Cast Steel Gate Valves	API 600, API 603 & ASME B16.34	2" TO 60"	ASME 150 TO ASME 1500	A216 WCB, A216 WCC, A352 LCC, A352 LCB, A217 WC1, A217 WC6, A217 WC9, A217 C5, A217 C12, A351 CF8, A351 CF8M, A351 CF3, A351 CF3M, A351 CF8C, A351 CN-7M, A890-6A, A890- 5A, A890- 4A
	Cast Steel Globe Valves & Angle Globe Valves	API 600, API 603 & ASME B16.34	1-1/2" TO 20"	ASME 150 TO ASME 1500	
	Cast Steel Swing Check Valves	API 600, API 603 & ASME B16.34	2" TO 48"	ASME 150 TO ASME 1500	
	O-Ring Seal Block & Bleed Gate Valves	API 600, API 603 & ASME B16.34	2" TO 24"	ASME 150 TO ASME 300	A216 WCB
	Cast Steel Cryogenic Gate, Globe & Check Valves	API 600, API 603 & ASME B16.34	2" TO 24"	ASME 150 TO ASME 600	A351 CF8, A351 CF8M
PS-1001	Pressure Seal Gate Valves	API 600 & ASME B16.34	2" TO 24"	ASME 600 TO ASME 2500	A216 WCB, A216 WCC, A352 LCC, A352 LCB, A217 WC1, A217 WC6, A217 WC9, A217 C5, A217 C12, A351 CF8, A351 CF8M, A351 CF3, A351 CF3M, A351 CF8C, A351 CN-7M, A890-6A, A890- 5A, A890- 4A
	Pressure Seal Globe Valves	ASME B16.34	2" TO 24"	ASME 600 TO ASME 2500	
	Pressure Seal Check Valves	ASME B16.34	2" TO 24"	ASME 600 TO ASME 2500	
FSV-1004	Forged Steel Gate Valves	API 602 & ASME B16.34	1/4" TO 2"	ASME 150 TO ASME 1500 & CLASS 800	A105N, A350 LF2, A182 F11, A182 F22, A182 F5, A182 F9, A182 F91, A182 F304, A182 F304L, A182 F316, A182 F316L, A182 F347, B148, B462, ALLOY 20, A182 F51, A182 F53, A182 F55
	Forged Steel Globe Valves	ASME B16.34	1/4" TO 2"		
	Forged Steel Check Valves, Swing, Piston & Ball	ASME B16.34	1/4" TO 2"		
TOB-1001	Triple Offset Butterfly Valves	API 609 & ASME B16.34	3" TO 24"	ASME 150 TO ASME 300	A216 WCB, A217 WC9, A351 CF8M, B148
			3" TO 12"	ASME 600	
HPB-1001	High Performance Butterfly Valves	API 609 & ASME B16.34	2" TO 100"	ASME 150	A216 WCB, A351 CF8, A351 CF8M, B148
			2" TO 40"	ASME 300	
			3" TO 24"	ASME 600	
RSB-1001	Resilient Seated Butterfly Valves	API 609 & ASME B16.34	2" TO 40"	ASME 150	A216 WCB, A351 CF8, A351 CF8M, B148
	Resilient Seated Butterfly Valves	API 609 & MSS SP67	2" TO 40"	ASME 125	A126 CL B, A395
WC-1001	Dual Plate Check Valves	API 594, API 6D, API 6A & ASME B16.34	2" TO 60"	ASME 150	A216 WCB, A216 WCC, A352 LCC, A352 LCB, A217 WC1, A217 WC6, A217 WC9, A217 C5, A217 C12, A351 CF8, A351 CF8M, A351 CF3, A351 CF3M, A351 CF8C, A351 CN-7M, A351 CG8M, B148 /A105, A350 LF2, A182 F316
				ASME 300	
			2" TO 48"	ASME 600	
			2" TO 36"	ASME 900	
			2" TO 24"	ASME 1500	
	2" TO 12"	ASME 2500			
CIV-1004	Cast Iron Gate Valves	MSS-SP-70, ASME B16.10 & ASME B16.1	2" TO 36"	CLASS 125	A126 CAST IRON, B62 BRONZE
	Cast Iron Globe Valves	MSS-SP-71, ASME B16.10 & ASME B16.1	2" TO 24"	CLASS 125	
	Cast Iron Swing Check Valves	MSS-SP-85, ASME B16.10 & ASME 16.1	2" TO 36"	CLASS 125	
NGV-1001	Needle Valves	ASME B16.34 ASME B16.34	1/4" TO 1" 1/4" TO 1/2"	6000WOG 10,000WOG	A105, A351 CF8M, AISI 12L14
	Gauge Valves	ASME B16.34	1/2"	6000WOG	
WH-1001	Wellhead & Christmas Tree Equipment (Including Gate Valves)	API 6A	1-3/16" TO 20-3/4"	API 3000, 5000 & 10000	AA, BB, CC, DD, EE, FF, GG, HH





Regd. Add.:
129/131,
Bhandari Street, 44-C,
Nr. Goldeval Temple,
Mumbai - 4. (INDIA).
Tel.: +91 22 23855676
+91 22 67438123

Mfgr. Unit :
Rajasthan - 343041.
Mob.: +91 9987870874

E-mail :
sales@fastwell.in
export@fastwell.in
fastwell@live.com

Branch Office :
Ahmedabad
Gujarat

www.fastwell.in